



INTERNATIONAL BROTHERHOOD OF ELECTRICAL WORKERS **LOCAL UNION 953 NEWS – DECEMBER 2009**

LOCAL OFFICERS

ARLIN ZIEMANN
Business Manager &
Financial Secretary

TIMOTHY J. HEMENWAY
President

BRADY L. WEISS
Vice President

KEITH T. HANSON
Recording Secretary

SCOTT A. MAGNUSON
Treasurer

EXECUTIVE BOARD

Chad A. Bilderback
Steven C. Burmeister
Scott C. Wild
David A. Hogan
Michael R. Yohnk

OFFICE STAFF

Dale Blank, Asst. Bus. Mgr
Robert Lahti, Asst. Bus. Mgr
Brady Weiss, Asst. Bus. Mgr
Connie Paulsrud, Office Mgr
Don Grorud, Accountant

OUR ADDRESS

2206 Highland Avenue
Post Office Box 3005
Eau Claire, WI 54702
TEL: 715-834-4911

INTERNET WEB PAGE

www.ibew953.org

E-mail Staff, see Web Page
For "Contact Us" link.



MERRY CHRISTMAS & HAPPY NEW YEAR!!
From the Staff of Local 953
Arlin, Dale, Bob, Brady, Don, and Connie

Happy Holidays Brothers and Sisters!

Again the Holidays are here signaling the end of another year. I would like to take the opportunity at this time to list all of the IBEW Contracts Local Union 953 represents (listed on reverse side of this page) and wish you all a Merry Christmas and a Happy New Year from myself and the staff.

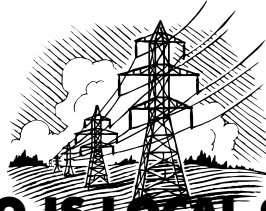
Notice to all "A" Members: At the 37th IBEW International Convention held in Cleveland, Ohio it was voted to increase the Membership Per Capita dues by \$1.00 for "A" Members, effective January 1, 2010. Therefore, "A" membership per capita dues will be \$26.00 per month, plus your working dues. If you are on dues deduction, please double check to make sure your employer is sending the correct amount. If you pay your dues on your own, please be aware of this increase. Thank you!

The Local will continue to have our Annual Ice Fishing Derby. This event seems to grow each year and a lot of good camaraderie comes from it. A registration form will be within this newsletter. Please return it by the due date so we can plan ahead for this event.

Best Wishes to all for 2010,

Arlin Ziemann
Business Manager





WHO IS LOCAL 953?

Local Union 953 was chartered May 26, 1919 with 10 members and one negotiated contract. Eighty-nine years later **YOUR** Union has 1,500 members with more than 50 different negotiated contracts:

Asplundh Tree Service	Henkels & McCoy, Inc.
Baldwin TeleCom, Inc.	Hooper Construction
Barron Electric Cooperative	Jo-Carroll Energy, Line
Chippewa Valley Electric	Jo-Carroll Energy, Office
City Brewing Company	Michael's Lighting
City of Arcadia	Michels Construction
City of Bangor	Michels Pipeline
City of Barron Utility	MJ Electric
City of Black River Falls	Northern Clearing
City of Bloomer	PAR Electric
City of Cornell	Pieper Line
City of Medford, Line	Pierce-Pepin Electric
City of New Richmond	Pierce-Pepin Propane
City of Rice Lake Utility	Polk-Burnett Electric
City of Spooner, Street	Price Electric, Line
City of Spooner, Utility	Price Electric, Office
City of Westby	Riverland Energy, Line
Clark Electric Cooperative	Riverland Energy, Office
Corix Utilities	Scenic Rivers Energy
Creative Energy Solutions	St. Croix Electric
Dairyland Power Cooperative	Taylor Electric Cooperative
Dairyland Power, Line	Town of Arcadia
DEC Propane Services	Vernon Electric Cooperative
Donovan Construction	Village of La Farge
Dunn Energy	Winona Lighting
Eau Claire Energy	Wright Tree Service
Energy Connections	Xcel Energy, Inc.
Everbrite - La Crosse	Zielie Tree Service
Great Lakes Line Builders	



MERRY CHRISTMAS



CONGRATULATIONS TO ALL LOCAL 953 SCHOLARSHIP WINNERS:



Matthew Altfillish, son of Donald Altfillish (Jo-Carroll Energy)
Ian Begeman, son of Anthony Begeman (Xcel Energy)
Nathan Daniels, son of Joseph Daniels (City of Medford)
Ryan Rothering, son of Ronald Rothering (Xcel Energy)
Samantha Smetana, daughter of Anthony Smetana (City of Black River Falls)

A LITTLE LOCAL 953 HISTORY

IBEW and Dairyland Power Company Dispute, 1948

IBEW Local B-953 served notice on the Dairyland Power Cooperative that unless matters were resolved soon the workers would strike the power plant. A wage increase of \$5 a week we being offered to them, the same as the one offered to the Brewery Workers during the same time. The Union was asking for a raise of \$10 a week for its 103 plant workers. The Union had come down to a raise of \$27.50 a month, but, the Company held to its \$20 a month offer. The Union then agreed to come down to \$27 a month increase. The Company offered them \$26. The Union came back with an answer of no; we need a raise of \$27 month. The Company offered \$26.75. Dairyland Power negotiators said, "If the men go out on strike, the loss of wages in one work day would be more than many would gain in three years." The plants at Genoa, Baldwin, Chippewa Falls and Alma would be affected by a strike. These plants served 53,000 Wisconsin farmers.

The IBEW Union scheduled a meeting with the Company. The Union served notice on the employer that if a settlement was not reached at that meeting, they would return to their contract demand of a \$40 a month pay boost. Lacking a settlement, the Union workers would shut down the machines in the four power plants.

The next day a settlement was reached. The Company agreed to the Union's request for a \$27.50 pay hike. The Union accepted an educational training program to determine qualifications for jobs in plants. It had taken in excess of 25 meetings to come to this settlement. No power shortage had occurred however. *(EXCERPT TAKEN FROM 'LA CROSSE LABORS' WRITTEN BY TERRY HICKS AFFILIATED WITH WESTERN WISCONSIN AFL-CIO)*

NOTICE TO ALL MEMBERS: The proposed amendments to the Local Union 953 Bylaws which were submitted to the International were not approved in full. Article XIII was approved as amended, however Article VII, Section 9 (a) and Article X, Section 6 (a) were not approved. The amended Local Union Bylaws are now available if you should want a copy sent to you please contact the Union Office.
